

## SOFAR 25K~50KTLX-G3

25 / 30 / 33 / 36 / 40 / 45 / 50 kW

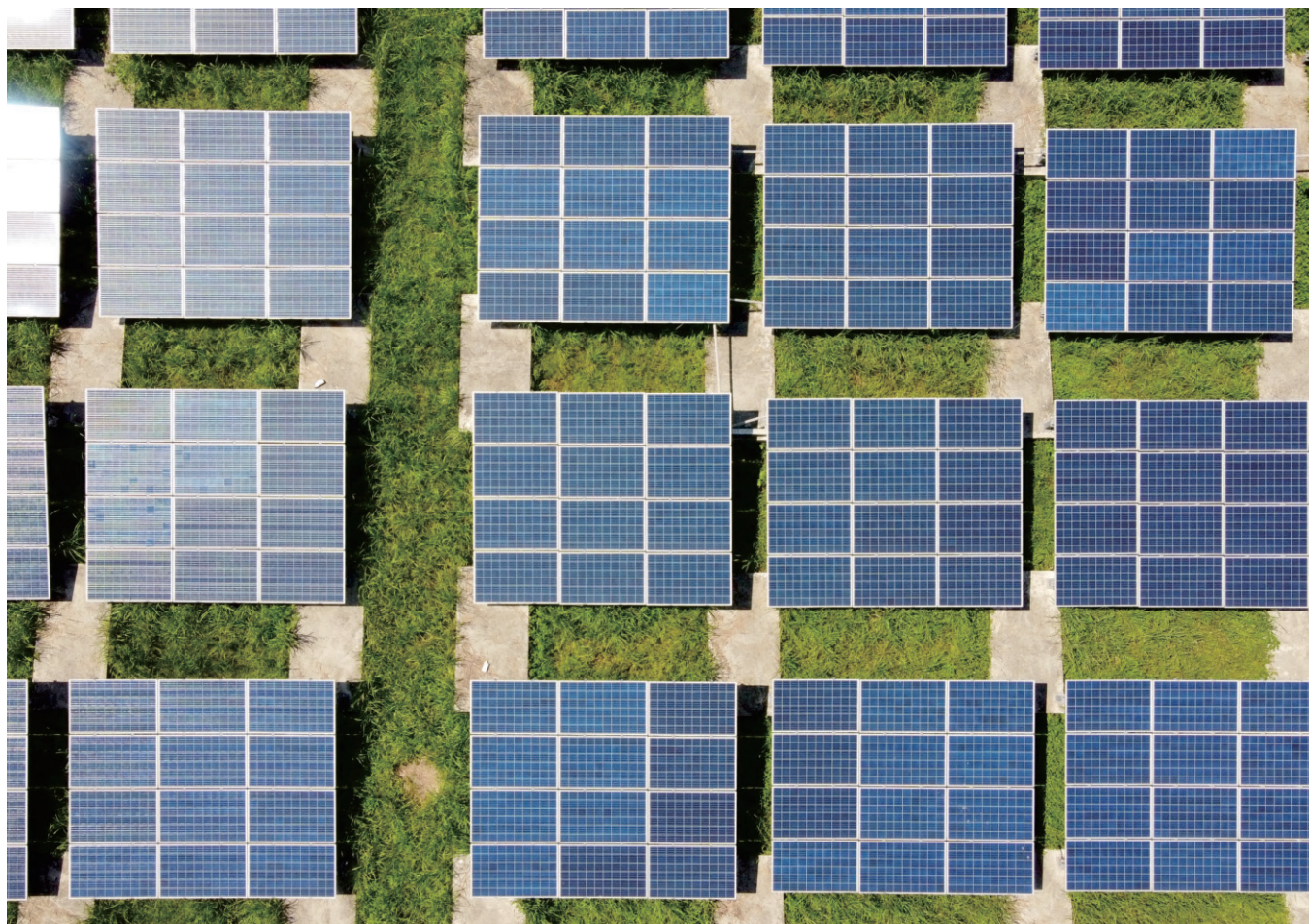
THREE-PHASE THREE TO FOUR MPPTS

---



### Product advantages

- Max. efficiency up to 98.6%
- Up to 4 MPPTs with DC overload capability (up to 150%)
- Type II SPD for both DC and AC side
- Prolonged AC overload capability (110%)
- Low start-up voltage, wide MPPT voltage range
- Compatible with 500 W+ modules
- I-V curve scanning function



Datasheet	SOFAR 25KTLX-G3	SOFAR 30KTLX-G3-A	SOFAR 33KTLX-G3	SOFAR 36KTLX-G3	SOFAR 40KTLX-G3	SOFAR 45KTLX-G3	SOFAR 50KTLX-G3
<b>Input (DC)</b>							
Max. input voltage	1100V						
Rated input voltage	620V						
Start-up voltage	200V						
MPPT operating voltage range	180V-1000V						
Number of MPPTs	3				4		
Number of DC inputs	2 for each MPPT						
Max. input MPPT current	3*40A				4*40A		
Max. input short circuit current	3*50A				4*50A		
<b>Output (AC)</b>							
Rated output power	25000W	29900W	33000W	36000W	40000W	45000W	50000W
Rated apparent power	25000VA	29900VA	33000VA	36000VA	40000VA	45000VA	50000VA
Max. apparent power	28000VA	29900VA	37000VA	40000VA	44000VA	50000VA	55000VA
Rated output current	36.2A	43.3A	47.8A	52.2A	58.0A	65.2A	72.5A
Max. Output current	42.4A	45.3A	56A	60.6A	66.7A	75.8A	83.3A
Rated output voltage	3/N/PE,230/400Vac						
Output voltage range	310Vac-480Vac						
Rated output frequency	50/60Hz						
Output frequency range	45-55Hz/55-65Hz						
Active power adjustable range	0-100%						
THDi	<3%						
Power factor	1 (adjustable+/-0.8)						
<b>Efficiency</b>							
Max. efficiency	98.6%						
European efficiency	98.2%						
<b>Protection</b>							
DC reverse polarity protection	Yes						
Anti-islanding protection	Yes						
Leakage current protection	Yes						
Ground fault monitoring	Yes						
PV-array string fault monitoring	Yes						
DC switch	Yes						
SPD	PV: type II, AC: type II						
<b>General Data</b>							
Ambient temperature range	-30°C~+60°C						
Self-consumption at night	<3W						
Topology	Transformerless						
Degree of protection	IP65						
Allowable relative humidity range	0-100%						
Max. operating altitude	4000m						
Cooling	Smart air cooling						
Dimension(W×H×D)	585×480×220mm						
Weight	36kg				37kg		
Display	LCD & Bluetooth +APP						
Communication	RS485/Wi-Fi						
Standard	IEC 61000-6-1/2/3/4, IEC 62116, IEC 61727, IEC 61683, IEC 60068-1/2/14/30, IEC 62109-1/2 AS/NZS 4777.2:2020						

\*All specifications are subject to change without notice.